



# MIKE WAGNER HERITAGE AWARD

## Rehabilitation / Adaptive Reuse Award

The Heritage Kitchener Committee of the  
City of Kitchener presents this award to


## Lindsay Construction Services

in recognition of their commitment to the conservation of  
Kitchener's cultural heritage resources.

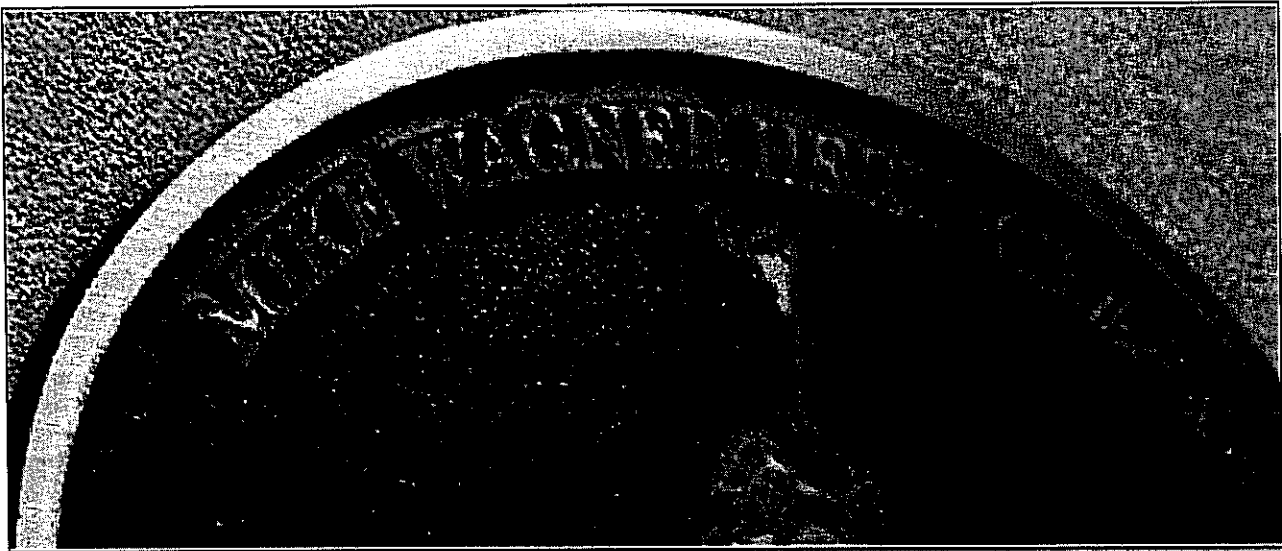
Awarded for the rehabilitation and adaptive reuse of the former Pine Grove  
School at 4336 King Street East, which brought new life to the building and  
contributed to the conservation of Kitchener's institutional built heritage.

**Presented this 7th day of February, 2012**

  
\_\_\_\_\_  
Mr. Kerry Kirby  
Co-Chair, Heritage Kitchener

  
\_\_\_\_\_  
Councilor Zyg Janicki  
Co-Chair, Heritage Kitchener

  
\_\_\_\_\_  
Carl Zehr  
Mayor, City of Kitchener



### Rehabilitation / Adaptive Reuse Award

Rehabilitation and adaptive reuse projects involve the sensitive adaptation of a cultural heritage resource or of an individual heritage attribute for a continuing or compatible contemporary use, while protecting its heritage value. This may be achieved through repairs, replacements, alterations and/or additions.

## **Borealis Grille & Bar** **4336 King Street East**

The original Pine Grove School (formerly known as "Little Paradise") opened in this location in 1809 and was reportedly the first schoolhouse in the County. The existing schoolhouse was built in 1889. The schoolhouse features buff brick construction, a front gabled roof, and new windows of complimentary design. The conservation project involved the adaptive reuse of the schoolhouse into a casual, fine dining venue. The schoolhouse was rehabilitated by removing paint from the exterior bricks; cleaning and resealing the interior wood floors; replacing rotted window sills; adding interior pressed metal ceilings; repointing the fieldstone foundation; installing new windows of complementary design; and, constructing an addition enabling the original rear elevation to be exposed on the interior of the building. The result is a rehabilitation and adaptive reuse project that has brought new life to the 1889 schoolhouse.

